

CAPABILITY STATEMENT





WHO IS INDIYA GEOSPATIAL?

Indiya Geospatial acknowledges the traditional owners of country throughout Australia and recognises their continuing connection to land, waters and community. We pay our respect to them and their cultures; and to Elders, both past and present.

Indiya Geospatial is one of Australia's only national Supply Nation certified surveying companies, creating a unique skill set amongst Indigenous businesses. Having a national footprint allows the company to offer a diverse range of employment and training opportunities to Indigenous people across the country. The company is committed to engaging other Indigenous businesses to provide quality services and support.

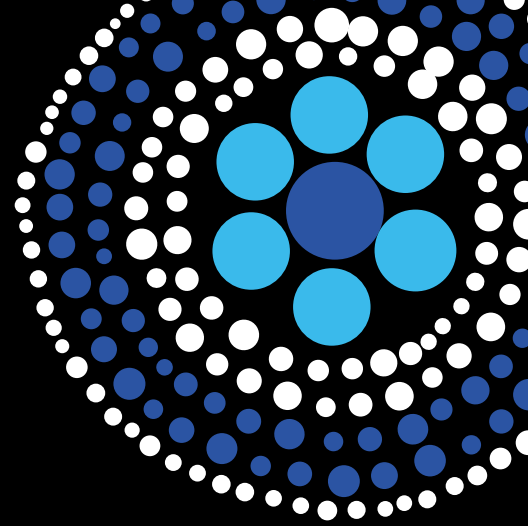
Our brand name **Indiya** originates from the Nhanda language group. Our Managing Director, Lawrence Hillary, is descended from the Nhanda people and has chosen the name Indiya, meaning 'star', as an

acknowledgement of all Aboriginal people's connection to celestial navigation. **Geospatial**, as described in the Cambridge Dictionary, relates to information that identifies where particular features are on the Earth's surface such as oceans and mountains.

Astronomy and the night sky has played a significant role in the traditions of Aboriginal people for tens of thousands of years, being used amongst other things, to predict changing seasons and the availability of resources. Aboriginal people have also turned to the skies for many years to aid in their navigation, using the stars to help guide their travels. Patterns of stars, referred to as star maps, are used as a means of teaching navigation outside of one's own local country showed the waypoints on the route, usually waterholes or turning places on the landscape, and were used in a similar way to navigating via GPS. Hence our name **Indiya Geospatial**, referring to 'mapping the Earth'.

.....

“Our brand name **Indiya** originates from the Nhandu language group”



LAWRENCE HILLARY

Managing Director

Our Managing Director, Lawrence Hillary, is a Nanda man from the Mid West – Gascoyne region of Western Australia. He brings to Indiya Geospatial a diverse range of life experience and skills which he has acquired in the last 30 years of his working life. This work experience includes working with people in custody, a seven year stint as a police officer with the Western Australian Police Service, three years with the Department of Fisheries and various roles within the Native Title industry. Lawrence's motivation has always been to work and engage with Aboriginal people and their communities. Through the success of Indiya Geospatial, Lawrence and the Indiya team are creating new pathways and careers for Aboriginal Australians in the survey industry.



PETER RULLO

Director

Licensed Surveyor, Peter Rullo, founded Land Surveys in 1997. Through hard work, professionalism and passion, Peter has expanded the business to now include multiple offices across Australia with over 200 surveyors employed Australia wide. Prior to establishing Land Surveys, Peter worked for Fugro Surveys and Automated Surveys. Peter's achievements include Bachelor of Surveying Degree from Curtin University 1992, Certificate of Competency - Land Surveyors Licensing Board, Registration of License - Land Surveying Licensing Board WA, Practicing Certificate - Land Surveyors Licensing Board WA, and SSSI Member.



SAFETY & QUALITY ASSURANCE

As core values of our operation, health, safety and the environment are focal points of everything we do.

We endeavour to strive for best practice to actively promote health, safety and the environment in all areas of our operations.

Indiya Geospatial continually strive to meet recognised standards of accreditation. The Business Management System for Indiya Geospatial's Perth, Karratha, Darwin, Melbourne, and Sydney locations is certified to ISO 9001:2015 Quality Management Systems and ISO 45001:2018 Occupational Health and Safety Management Systems, with the Brisbane location also conforming to these standards. In addition to this, Indiya Geospatial operates an Environmental Management System based on the requirements of ISO 14001:2015 Environmental Management Systems.

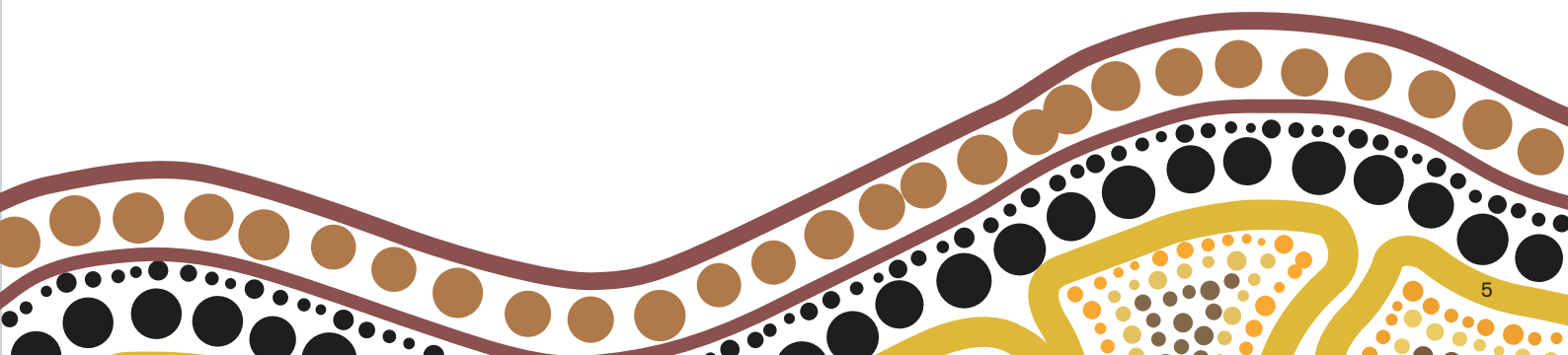


EXPERIENCE



Our long history of servicing construction, engineering and resources projects across Australia has provided us with an exceptional amount of experience in delivering surveying solutions to our clients.

Through our large number of Mine Authorised, Engineering and Licensed Surveyors, we have the capability to provide specialist expertise, equipment and experience specific to the project's requirements. Our ability to consistently deliver a quality service has been fundamental to our continuing success.



ENVIRONMENTAL RESPONSIBILITY

.....



To help preserve the natural environment, our company operates in an environmentally responsible way, minimising waste and reducing immediate and long-term stress on the environment, wherever possible.

OUR TEAM

.....



At Indiya Geospatial, we understand that our team is the key to our success - now and in the future.

We strive to be an employer of choice and focus on developing leadership, professionalism and technical knowledge. To gain recognition of these attributes, we encourage our Surveyors to apply for ESP-AP Certification through the Surveying & Spatial Sciences Institute (SSSI).

Each project has the support of our dedicated operational team, consisting of:

- Operations Manager
- Survey Manager
- Project Coordinators
- Project Assistants
- HSEQ Department
- HR Department

OUR TRAINEESHIP PROGRAM



Having a national footprint allows the company to offer a diverse range of employment and training opportunities to Indigenous people across the country.

Our Indigenous trainees have access to knowledge and information from trusted and qualified surveyors with a wealth of industry knowledge. The Indiya Geospatial's Traineeship Program provides opportunities to Indigenous kids who are unsure of which career path to follow.

Through our Traineeship Program, successful candidates will be enrolled into a nationally recognised surveying course through TAFE. This unique opportunity allows for a combination of employment with on-the-job, practical training.



OUR SERVICES



Our accurate and efficient surveying methods, combined with our extensive experience within the industry allows us to deliver fit for purpose surveying solutions to our clients.

We have delivered our expertise and survey solutions on numerous infrastructure, mining, land development and transport projects with great success, and stand proud of our reputation and achievements.

- Digital Engineering
- 3D Reality Capture
- UAV Aerial Mapping
- Engineering Services
- Dilapidation Services
- Monitoring
- Land Development
- Mining Services
- Utility Mapping
- Rail Services



PARTNERSHIPS

IntelliSpatial

Utilising geospatial information to enable our clients to better understand the built environment and make informed decisions.



Specialist services focused on high accuracy dimensional control surveys, laser scanning and 3D modelling.

Land Surveys

Providing surveying and geospatial solutions that exceed our clients' expectations.

Utility MAPPING

Subsurface utility detection, 2D and 3D utility surveys, condition assessment, and non-destructive excavation.



Responsive high-quality reporting and documentation, using innovative technology and flexible reporting platforms.



Specialist services centred on high accuracy dimensional control survey and 3D scanning.

RELATIONSHIPS

Over many years we have developed a proven track record for supplying high quality surveying services on large-scale projects.



A decorative Aboriginal art pattern in the bottom left corner, featuring concentric circles and dots in brown and gold colors.

PERTH OFFICE

19 Brennan Way
Belmont, WA 6104

T: (08) 9477 4477

F: (08) 9477 4499

KARRATHA OFFICE

Unit 45, Karratha Business
Center,
5-12 Sharpe Ave
Karratha, WA 6714

T: (08) 9143 1744

F: (08) 9143 1755

DARWIN OFFICE

1/11 Bombing Road
Winnellie, NT 0821

T: (08) 8984 4078

BRISBANE OFFICE

Unit 3, 3990 Pacific Highway
Loganholme, QLD 4129

T: (07) 3267 0074

SYDNEY OFFICE

Unit 8, 3 Gibbes Street
Chatswood NSW 2067

T: (02) 9439 6925

MELBOURNE OFFICE

Unit 2, 85 Salmon Street
Port Melbourne, VIC 3207

T: (03) 9646 0864

